

## *Immerse yourself fully* in one of these eight options:

### OSHO MULTIVERSITY LIVING IN

Multiversity Plus – 30 days

Meditation Plus – 14 days

A Week Within – 7 days

This residential program is tailored for anyone who wants to give themselves the transformative combination of OSHO Multiversity courses along with a full program of life-changing meditations.

### OSHO ZEN EXPERIENCE – 30, 14, or 7 days

Explore the Meditation Resort at your leisure, with optional program guidance for meditation.

### CREATIVE LIVING – 90 days

(Can be booked in monthly segments).

Discover the art of living a meditative life with no artificial divisions between work and play, effort and relaxation.

### WORK AS MEDITATION – 30 days

An opportunity to integrate meditation into daily life, whether “working” or “relaxing.” Available for Participants who have completed the 3 months Creative Living program.

**OSHO**  
*Living In*  
Residential Programs

For stays of 7, 14, 30 days or longer.  
Accommodation is in single occupancy  
rooms, and the Meditation Resort’s daily  
meditation (entry) pass is included.

## **FIND US**

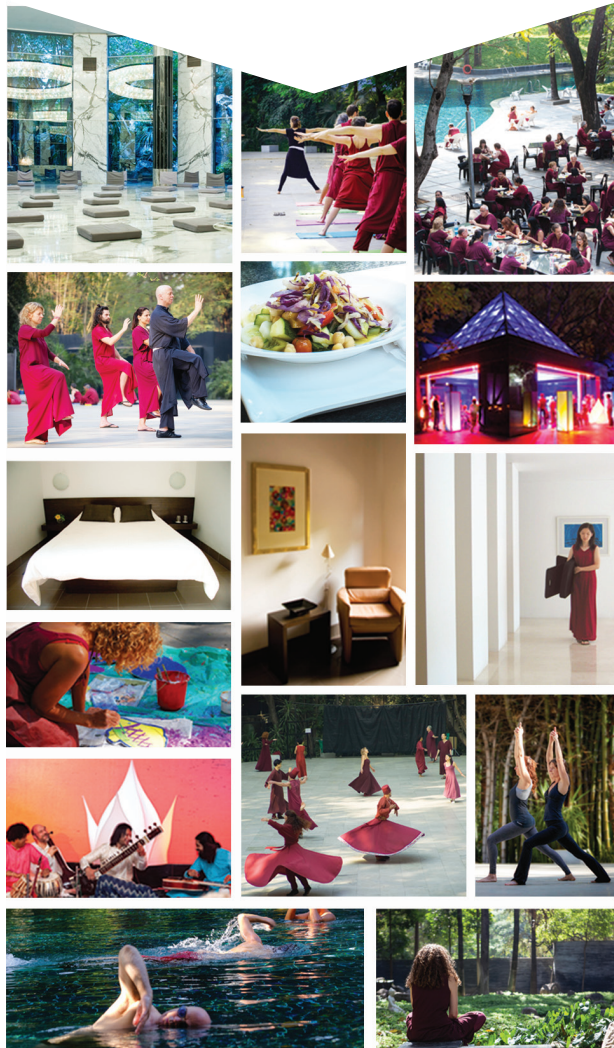
On campus at the “Living In” office

OSHO Living In Residential Programs  
17 Koregaon Park, Pune 411001 India  
Email: [livingin@osho.net](mailto:livingin@osho.net)  
[www.osho.com/livingin](http://www.osho.com/livingin)



"A meditator needs no personal guidance. A meditator, on the contrary, needs only one thing: the atmosphere of meditation."

*Osho*



*A beautiful place...  
...to stay*

## OSHO Guesthouse

The Guesthouse is located next to the OSHO Auditorium and the rooms are aesthetically designed to support your meditation – the ultimate inner and outer luxury.

All our rooms have attached bathrooms, double beds, A/C, and purified fresh air supply.

**Enjoy!**

- Front desk with 24-hour check-in
- Laundry and daily housekeeping
- Wi-Fi in the lounge & meeting area
- Book for any length of time

OSHO Guesthouse  
Tel: +91-(0)20-6601 9900  
Email: [guesthouse@osho.com](mailto:guesthouse@osho.com)



**OSHO®**  
*Living In*  
Residential Programs  
&  
**OSHO Guesthouse**